

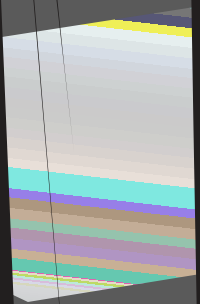
SHALING

25th

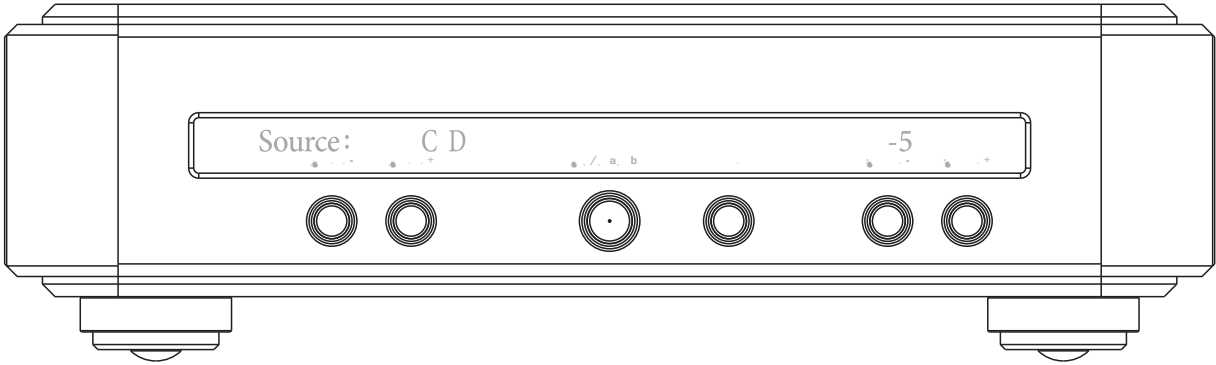


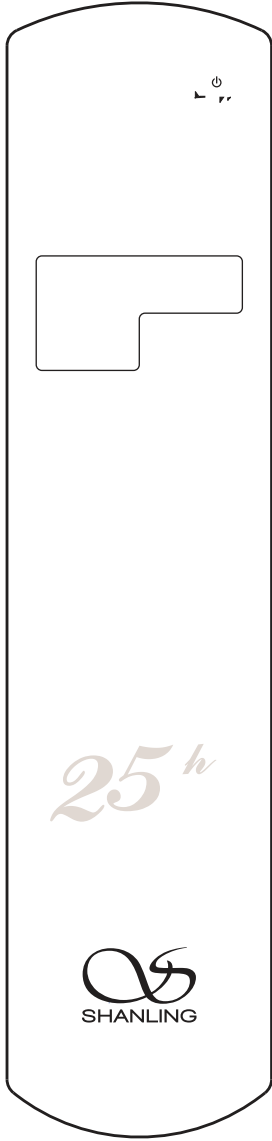
Source: C D

P60











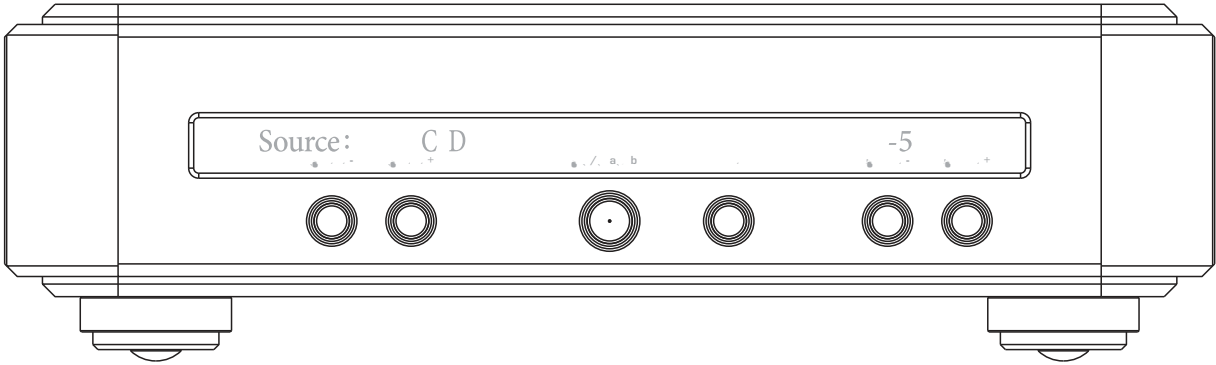


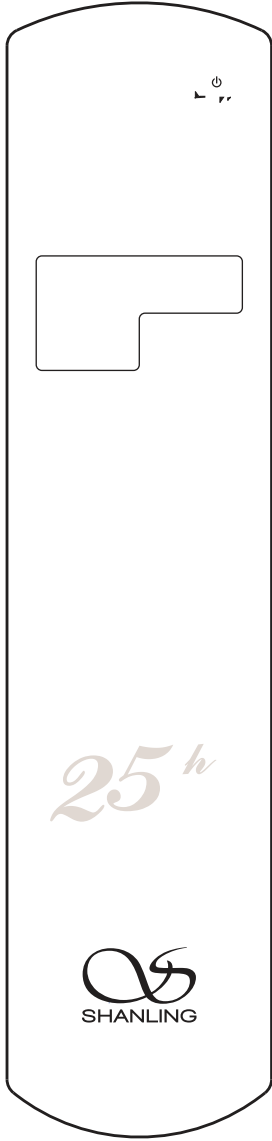


Thank you for buying tube pre amplifier. We would like to take this opportunity to express our sincere appreciation to you. We recommend you to read this user's manual carefully before operating the unit and keep it available for reference when needed.



-
1. Do not open this unit for repair or modification by anyone other than a qualified technician! This product has no user-serviceable parts. Opening the unit and modifying the internal circuitry can make subsequent maintenance difficult or impossible and affect performance and sound quality.
 2. For good ventilation, a minimum of 10cm clearance shall be maintained at the back and two sides and 20cm at the top of the unit.
 3. Allow no water dripping or splashing into the unit. Place no object containing liquid on the unit, e.g. Vase.
 4. Do not cover any ventilation hole with newspaper, cloth, curtain, etc. in case of ventilation blocking.
 5. Allow no exposed flame source on the unit, e.g. burning candle.
 6. The unit shall be connected to AC power output socket with grounding protection.
 7. If power plug and appliance coupler are used as disconnecting device, the disconnecting device shall be easily operable.
 8. The waste battery must be treated according to relevant local battery wasting regulations.





■ Turn on/off

1. First connect the unit power line and signal line. Locate the power switch on the rear panel at the position [ON], and the power indicator on the panel turns red. At this time, press [on/standby] key or [POWER] key on the remote controller, and the indicator turns green and blinks. The unit enters warming-up status. After about 30 seconds, the unit enters normal working status.
2. To turn off this unit, first press [on/standby] key on the panel or [POWER] key on the remote controller, and then locate the power switch on the rear panel at the position [OFF]. At this time, the unit is in "off" status.
3. If the unit is not to be used for some time, it should be unplugged to disconnect it from AC power.

■ Input Switching

Press [source-/source+] key on the panel or [◀ INPUT ▶] key on the remote controller to switch the audio signal to the corresponding input interface, and the multifunction display window displays the corresponding input status.

■ Volume Adjustment

Press [volume-/volume+] key on the front panel or [VOL-/VOL+] key on the remote controller to adjust volume, and the multifunction display window displays the corresponding volume status.

■ Mute

1. In the sound status, press [mute] key on the front panel or [MUTE] key on the remote controller, and the multifunction display window displays "Mute". At this time, the unit is without sound output.
2. In the mute status, press [mute] key on the front panel or [MUTE] key on the remote controller, and the multifunction display window displays the original character and the sound status is resumed.

■ Screen Brightness Adjustment

1. Use [DIMMER] key on the remote controller to adjust the brightness of display based on the brightness of surrounding environment. Each press will circularly change the screen brightness from "bright", "dim" to "off".
2. The screen brightness is automatically set as "bright" at startup.



Technical parameters	Input sensitivity: 315mV/47K Ω Gain: 10dB Frequency response: 20Hz - 30KHz (- 0.5dB) Channel separation: >70dB Total harmonic distortion (1KHz/2V): <0.1% Signal noise ratio: >98dB
General parameters	Power consumption: 35W Standby power consumption: <0.5W Dimension (W x D x H): 480 x 400 x 142(mm) Net weight: about 19kg



Power cord w/3-prong plug: 1 3.5mm double channel earphone connection line:1 Remote controller: 1 User's manual: 1 copy Warranty card: 1
--

公司名称 深圳山灵